

Product Lineup

An extensive product lineup that responds to the needs of the market

Special Graphite

Isotropic Graphite

In addition to possessing graphite's excellent properties such as heat resistance, chemical resistance, and thermal conductivity, the nature of isotropic graphite's structure means it is not subject to directional constraints. Moreover, its fine particle structure provides high rigidity and ensures extremely little variation between materials. These properties are being used to advantage in a variety of industrial fields such as semiconductors, energy applications including solar and nuclear power generation, and metallurgical applications.

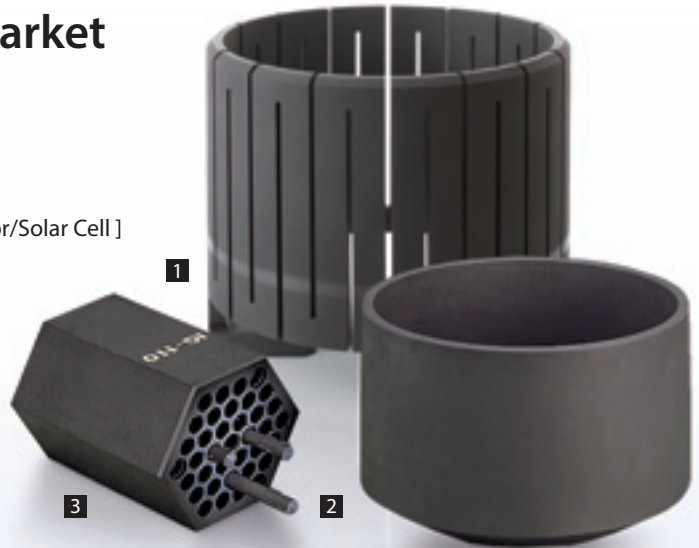
[For Semi-conductor/Solar Cell]

- 1 Heater
- 2 Crucible

[For Atomic Power]

- 3 Core component for High Temperature Gas-cooled Reactor

Photograph: provided by the Japan Atomic Energy Agency



[For Metallurgical]

- 1 Continuous Casting Dies
- 2 Heater
- 3 Crucible for melting metals



[For Electric discharge machining (EDM)]

- 1 Electrodes for turbine blades
- 2 Electrodes for Speaker



Carbon products for general industries

Carbon Products for Mechanical applications

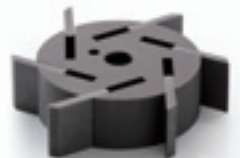
The self-lubricating properties and heat and chemical resistance of carbon materials are being used in many fields, in which typical metal sliding materials cannot be used due to their inability to cope well with high-temperature atmospheres, immersion in fluids, or exposure to lubricants.

- 1 Seal Ring
- 2 Bearing
- 3 Packing



[For Automobiles]

Rotor and Vane



[For Trains]

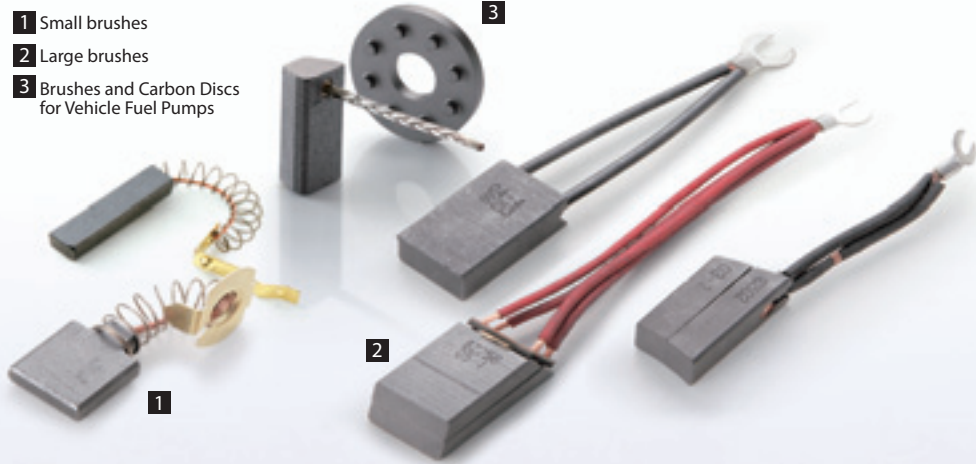
Slider for Pantograph



Carbon products for general industries

Carbon products for electrical applications (Carbon Brush)

Carbon brushes maintain a consistent and continuous supply of electricity as they slide against rotating elements. We supply models for use in small motors such as those used in vacuum cleaners and power tools, and models for use in large motors such as those used in collection systems for wind generators and other applications.

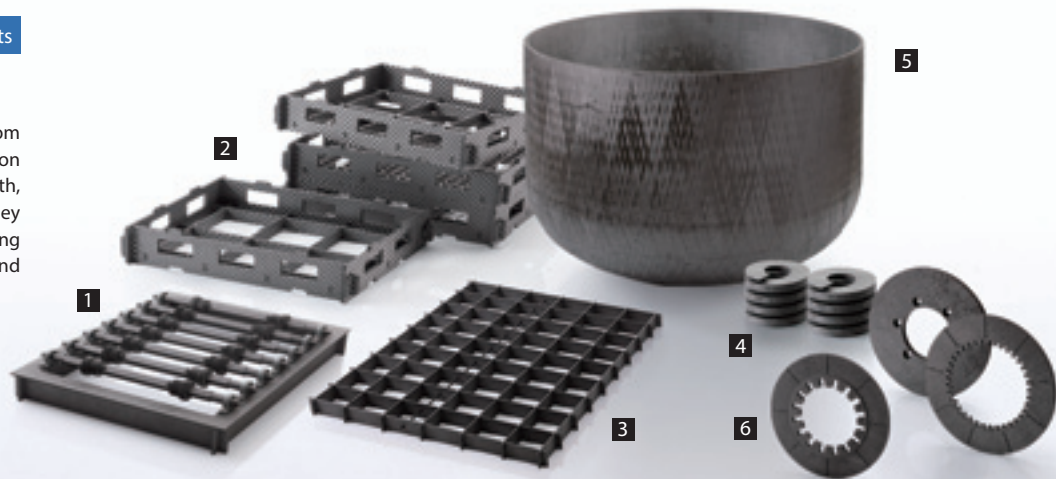


Compound materials and other products

C/C composite products

C/C composite materials are made from carbon reinforced with high-strength carbon fiber. Thanks to their improved strength, shock resistance, and other properties, they are being used in a variety of fields including high-tech industries such as aerospace and semiconductors.

- 1 Roller hearth
- 2 Basket
- 3 Base tray
- 4 Spring
- 5 Crucible
- 6 Clutch



Compound materials and other products

Graphite sheets PERMA-FOIL™

PERMA-FOIL™ products are lightweight graphite sheets that offer good flexibility and compression recovery properties. PERMA-FOIL™ adheres closely to opposing materials and has excellent thermal conductivity, making it suitable for use in sealing materials such as gaskets and packing, and in heat equalization materials.

- 1 Gasket
- 2 Roll products



Compound materials and other products

Surface Treatment

By conducting surface treatment or combining with different materials, we can add value to graphite substrates, for example, by increasing wear and corrosion resistance and imparting dust-preventive properties.

- 1 TaC-coated Graphite EVEREDKOTE™
- 2 SiC coated graphite PERMA KOTE™

